

Murcielago

Farms

ANNUAL BULL SALE

SATURDAY • DECEMBER 7, 2013
NOON
SCOTTSVILLE • VA

Murcielago Farms

Welcome to Murcielago Farms and our annual Fall Bull Sale. For those of us in Virginia and surrounding states we have certainly enjoyed ample rainfall and lush pastures this spring, summer and early fall. Couple that with record cattle prices and it has been a great year to be in the beef business. We have gathered what we feel to be an outstanding set of bulls for this year's sale. We have a strong belief in making disciplined breeding decisions that will positively influence the bottom line of our customers. Economically important traits such as calving ease, growth and carcass merit are some of our priorities but we have not lost sight of creating this package in a sound, functional animal.

Murcielago Farms is not solely in the Registered Angus business. An important part of our operation is an Angus-based commercial herd so we fully realize the importance of selling cattle by the pound. We strive to make every bull we sell capable of improving the genetics in our own herd so that we can feel confident they will perform for you in your herd. Every bull in this year's sale has been raised in large pastures to provide them with adequate exercise in order to develop natural muscling. They have all been through a breeding soundness exam performed by a licensed veterinarian and are pasture ready. As always, every bull sold is guaranteed to be a sound breeder for one year from the date of purchase.

Murcielago Farms is invested in the success of our customers. If you are a returning customer then we thank you for your loyalty and confidence in our program. If you are visiting us for the first time, we appreciate your interest and hope that we can fulfill any needs you may have. Anyone interested in viewing the bulls prior to the sale or have any questions, please do not hesitate to contact me.



Keith Shifflett
General Manager

Average EPDs among Non-parent Bulls

CED	BW	WW	YW	YH	SC	Doc	CEM	Milk	CW	Marb	RE	Fat	\$W	\$F	\$G	\$B
+6	+1.8	+46	+84	+4	+61	+11	+8	+24	+26	+45	+41	+011	+26.98	+27.90	+27.90	+64.60

Average EPDs among Bulls in the Sale

CED	BW	WW	YW	YH	SC	Doc	CEM	Milk	CW	Marb	RE	Fat	\$W	\$F	\$G	\$B
+9	+1.9	+55	+101	+5	+48	+15	+10	+29	+32	+84	+75	+012	+28.20	+44.06	+43.16	+87.41
Top 20%	Top 15%	Top 10%					Top 25%	Top 15%	Top 25%	Top 10%	Top 10%		Top 15%	Top 10%	Top 5%	

Murcielago Farms

ANNUAL BULL SALE

Saturday • December 7, 2013
Noon • Scottsville, VA

Sale Day Phones:

Mt. Ida Barn (434) 286-2617 Keith Shifflett (434) 531-4057

Auctioneer:

Gary Vance (540) 622-4889

Schedule of Events:

9:00 am - Noon Cattle on Display
11:00 am Lunch Available
Noon Start of Sale

Ringmen:

Chris Wojciechowski - (540) 292-0841
Scott Weller - (540) 294-0555

Hotels:

There are a number of hotels in the Charlottesville area. Below are a few of the hotels with contact information. Please contact these hotels directly for room rates and booking.

Sleep Inn Monticello (434) 244-9969

Comfort Inn Monticello (434) 977-3300

Holiday Inn Monticello (800) 977-9991

Breeding Soundness Guarantee:

All bulls sold are guaranteed to be sound breeders for one year from the day of the sale. Death or injury to the bull is covered by the one year guarantee. A bull that settles a female by natural service and passes a breeding soundness exam performed by a licensed veterinarian will be considered a sound breeder. This guarantee does not cover negligence or malnutrition on the bull once he leaves Murcielago Farms. The purchase price of the bull will be credited to the buyer to be used towards future Murcielago Farms bull purchases. Murcielago Farms will receive any salvage value.

The EPDs in this catalog are current
as of October 15, 2013.

Discounts:

A 5% discount will be applied to buyers who purchase 3 or more bulls on the day of the sale. A \$50 discount will be applied to buyers who pick up and settle for bulls purchased on the day of the sale.

Announcements/Updates:

Any announcement or update made on sale day will take precedence over printed material.

Terms and Conditions:

These cattle sell under the standard terms and conditions as set forth by the American Angus Association. A copy of these terms is available through any American Angus Association Regional Manager. Visa and Mastercard payments will be accepted.

All buyers will deliver payment within 30 days of the sale. Amounts remaining unpaid after 30 days will be subject to finance charges and cost of collection including attorney fees.

Sale Location:

Directions and a map to the sale location can be found on the inside back cover of this sale book.

Absentee Bids:

Buyers unable to attend the sale may send their bids to the Auctioneer, Ringmen or Keith Shifflett.



follow us on FACEBOOK



Visa and Mastercard will be accepted on sale day.

Tom Sullivan & Family, Owner
Keith Shifflett, Manager
Cell: (434)531-4057
Office/Fax: (434)286-4344

Employees:
Wes Widener, Kendall Herring, Eric Hylton
Whitney Shifflett, Ferris Hovey, Dave Sage
Richard Bickley and Kim Atkins

538 Mt. Pleasant Farm
Scottsville, VA 24590
murcielagofarms@yahoo.com
www.murcielagofarms.com

PERFORMANCE LEADERS

Murcielago

Murcielago Protege 2047

1 Farms Birth date: 08/13/2012 Bull: +17537568 DDF Tattoo: 2047

#+Rito 112 of 2536 Rito 616 #Rito 616 of 4B20 6807
 +GAR-EGL Protege GAR Precision 2536
 15098880 LB 6807 Isabel 339 #DHD Traveler 6807
 #LB E31 Isabel 168

#GAR Predestined #B/R New Design 036
 +Murcielago Blackcap U100 #+GAR Ext 4206
 16201073 +VT 1407 New Design Z38 #Bon View New Design 1407
 +GAR Plowman G240

\$W	+22.28
\$F	+56.95
\$G	+47.41
\$B	+102.16

CED	BW	WW	YW	Milk	CW	Marb	RE	SC	Doc		
+10	+1.2	+54	+111	+18	+42	+1.25	+0.79	-0.39	+14		
ADG Ratio	BW	Adj. WW Ratio	WW Ratio	Adj. YW Ratio	YW Ratio	Frame	SC	Adj. RE	RE Ratio	Adj. IMF	IMF Ratio
109	71	605	93	1125	104	5.3	32.09	11.5	111	6.14	165

Murcielago Protege 2047 is one of the most valuable prospects to be offered in the 2013 sale. He combines calving ease, tremendous growth and impressive carcass merit. Multiples generations of proven genetics has made 2047 a complete package. Full brothers to 2047 sell as Lots 2, 40 and 41.

- Second highest IMF
- Fifth highest \$B

Ranking among Non-parent bulls

Top 1% \$B	Top 2% \$F	Top 10% RE
Top 1% Marb	Top 3% YW	Top 10% CW
Top 1% \$QG	Top 3% \$G	Top 10% CEM

MURCIELAGO PROTEGE 2047

Lot 1



MURCIELAGO PROTEGE 2029

Lot 2



Murcielago

Murcielago Protege 2029

2 Farms Birth date: 08/08/2012 Bull: +17537553 DDF Tattoo: 2029

#+Rito 112 of 2536 Rito 616 #Rito 616 of 4B20 6807
 +GAR-EGL Protege GAR Precision 2536
 15098880 LB 6807 Isabel 339 #DHD Traveler 6807
 #LB E31 Isabel 168

#GAR Predestined #B/R New Design 036
 +Murcielago Blackcap U100 #+GAR Ext 4206
 16201073 +VT 1407 New Design Z38 #Bon View New Design 1407
 +GAR Plowman G240

\$W	+24.20
\$F	+54.14
\$G	+44.86
\$B	+100.54

CED	BW	WW	YW	Milk	CW	Marb	RE	SC	Doc		
+10	+1.8	+57	+110	+18	+44	+1.02	+0.8	+0.25	+14		
ADG Ratio	BW	Adj. WW Ratio	WW Ratio	Adj. YW Ratio	YW Ratio	Frame	SC	Adj. RE	RE Ratio	Adj. IMF	IMF Ratio
116	76	661	100	1211	100	6.7	35.93	12.6	108	3.31	91

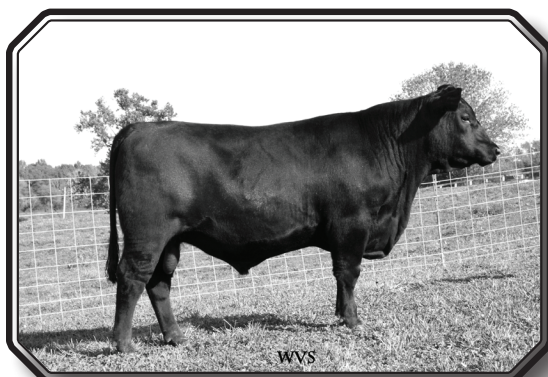
Murcielago Protege 2029, a full brother to Lot 1, is an outstanding son of the proven donor Murcielago Blackcap U100. The donor dam is a direct daughter of the long time cornerstone donor in the Murcielago program, VT 1407 New Design Z38.

- Fourth highest ADG
- Fifth highest YW

Ranking among Non-parent bulls

Top 1% \$B	Top 3% \$F	Top 10% CEM
Top 2% \$QG	Top 10% WW	Top 10% \$G
Top 3% Marb	Top 10% RE	Top 10% CW
Top 3% YW		

PERFORMANCE LEADERS



MURCIELAGO PROPHET 2023

Lot 3

Ranking among Non-parent bulls		
Top 1% \$B	Top 2% YW	Top 3% \$F
Top 1% \$QG	Top 2% WW	Top 5% RE
Top 1% Marb	Top 2% \$G	Top 10% Milk

Murcielago

Murcielago Prophet 2023

3 Farms

Birth date: 08/05/2012 Bull: +17533317 DDF Tattoo: 2023

#CRA Bextor 872 5205 608 #BAR Ext Traveler 205
 +GAR Prophet 16295688 +GAR Objective 1885 Cra Lady Jaye 608 498 S Easy
 #+SS Objective T510 0T26
 GAR 1407 New Design 2232

#+B/R Ambush 28	#Rockn D Ambush 1531	\$W	+31.24
+Murcielago Barbara 9247	+B/R Ruby of Tiffany 8250	\$F	+54.51
16507113 +Three Trees Barbara S1602	#GAR Predestined	\$G	+50.68
	+Three Trees Barbara 1420	\$B	+103.01

CED	BW	WW	YW	Milk	CW	Marb	RE	SC	Doc		
+7	+1.9	+64	+113	+31	+39	+1.25	+0.87	+0.35	+21		
ADG Ratio	BW	Adj. WW	WW Ratio	Adj. YW	YW Ratio	Frame	SC	Adj. RE	RE Ratio	Adj. IMF	IMF Ratio
110	73	615	100	1140	100	6.1	35.84	11.9	102	4.03	111

Murcielago Prophet 2023 is a tremendous multi-trait prospect by a young donor in the Murcielago herd. The donor dam post progeny ratios of WY 1@104, YR 1@100, IMF 14@102 and REA 14@109. A maternal brother sells as Lot 7.

- Fourth highest \$B

Murcielago

Murcielago Daybreak 2038

4 Farms

Birth date: 08/10/2012 Bull: +17534352 DDF Tattoo: 2038

#+Boyd New Day 8005 #AAR New Trend
 MCC Daybreak +SVF Forever Lady 57D
 14777016 #MCC Miss Focus 134 #SAF Focus of ER
 +MCC Miss Chief 519

#Sitz Upward 307R #Connealy Onward
 +Murcielago Blackcap X107 Sitz Henrietta Pride 81M
 16995640 +VT 1407 New Design Z38 #Bon View New Design 1407
 +GAR Plowman G240

\$W	+21.92
\$F	+68.83
\$G	+39.76
\$B	+99.18

CED	BW	WW	YW	Milk	CW	Marb	RE	SC	Doc		
+13	+2.5	+62	+123	+24	+47	+0.68	+0.83	+0.64	+12		
ADG Ratio	BW	Adj. WW	WW Ratio	Adj. YW	YW Ratio	Frame	SC	Adj. RE	RE Ratio	Adj. IMF	IMF Ratio
106	80	701	108	1216	113	6.5	36.18	10.8	104	3.47	93

Murcielago Daybreak 2038 is an outstanding out-cross prospect by the calving ease sire MCC Daybreak. Power and growth best describe this bull who is from the same cow family as the bulls selling as Lots 1 & 2 in the sale.

- Second highest CED
- Fourth highest YW



MURCIELAGO 5050 ND 2011

Lot 5

Ranking among Non-parent bulls		
Top 1% \$B	Top 1% \$G	Top 1% Marb
Top 1% \$QG	Top 1% RE	Top 2% \$YG



MURCIELAGO DAYBREAK 2038

Lot 4

Ranking among Non-parent bulls		
Top 1% \$B	Top 1% \$F	Top 4% CW
Top 1% YW	Top 3% CED	Top 10% RE
Top 1% CEM	Top 3% WW	

Murcielago

Murcielago 5050 ND 2011

5 Farms

Birth date: 08/02/2012 Bull: +17533161 DDF Tattoo: 2011

#B/R New Design 036 #VDAR New Trend 315
 +GAR New Design 5050 B/R Blackcap Empress 76
 13728513 +GAR Precision 706 #GAR Precision 1680
 +GAR Ext 2114

#+B/R Ambush 28	#Rockn D Ambush 1531	\$W	+29.26
+Murcielago Everelda 045	+B/R Ruby of Tiffany 8250	\$F	+40.00
16687289 +Castle Hill Everelda C506	#B/R New Design 323	\$G	+55.43
	+Sitz Everelda Entense 023	\$B	+103.41

CED	BW	WW	YW	Milk	CW	Marb	RE	SC	Doc		
+7	+2	+55	+98	+29	+35	+1.14	+1.2	+0.63	+25		
ADG Ratio	BW	Adj. WW	WW Ratio	Adj. YW	YW Ratio	Frame	SC	Adj. RE	RE Ratio	Adj. IMF	IMF Ratio
111	66	614	100	1139	100	6.1	37.74	13.5	115	4.19	115

Murcielago 5050 ND 2011 is one of the top sons being offered by the now deceased breed leader GAR New Design 5050. He is one of the top performance bulls in the sale ranking in the top 2% for six different traits.

- Second highest \$B
- Third largest REA

PERFORMANCE LEADERS

Murcielago

Murcielago Prophet 2113

6 Farms Birth date: 08/31/2012 Bull: 17533321 Tattoo: 2113

#CRA Bextor 872 5205 608 #BAR Ext Traveler 205
 +GAR Prophet Cra Lady Jaye 608 498 S Easy
 16295688 +GAR Objective 1885 #+SS Objective T510 0T26
 GAR 1407 New Design 2232

+Rito 4S5 of 2536 SA
 +Murcielago Polly U071
 16260844 +Oak Hill Polly 8200

#Sitz Alliance 6595
 GAR Precision 2536
 #Traveler 124 GDAR
 +VDAR Polly 4027

\$W	+33.57
\$F	+64.63
\$G	+43.14
\$B	+94.04

CED	BW	WW	YW	Milk	CW	Marb	RE	SC	Doc		
+8	+1	+70	+123	+36	+36	+1.1	+0.56	+0.07	+26		
ADG Ratio	BW	Adj. WW Ratio	WW Ratio	Adj. YW Ratio	YW Ratio	Frame	SC	Adj. RE Ratio	RE Ratio	Adj. IMF Ratio	IMF Ratio
112	72	731	113	1229	112	5.9	33.7	12.9	108	4.81	130

- Second highest YW
- Fifth highest WW

Ranking among Non-parent bulls		
Top 1% \$F	Top 1% WW	Top 2% CW
Top 1% \$QG	Top 1% YW	Top 10% \$G
Top 1% Milk	Top 2% \$B	



MURCIELAGO PROPHET 2113
Lot 6

Murcielago

Murcielago Ingenuity 2084

7 Farms Birth date: 08/21/2012 Bull: 17533331 DDC Tattoo: 2084

#+GAR New Design 5050 #B/R New Design 036
 +GAR Ingenuity +GAR Precision 706
 16497066 GAR Objective 1067 #+SS Objective T510 0T26
 GAR Retail Product 2195

#+B/R Ambush 28 #Rockn D Ambush 1531
 +Murcielago Barbara 9247 +B/R Ruby of Tiffany 8250
 16507113 +Three Trees Barbara S1602 #GAR Predestined
 +Three Trees Barbara 1420

\$W	+27.09
\$F	+40.48
\$G	+54.01
\$B	+107.94

CED	BW	WW	YW	Milk	CW	Marb	RE	SC	Doc		
+4	+2.7	+54	+99	+33	+43	+1.18	+1.16	+1.05	+20		
ADG Ratio	BW	Adj. WW Ratio	WW Ratio	Adj. YW Ratio	YW Ratio	Frame	SC	Adj. RE Ratio	RE Ratio	Adj. IMF Ratio	IMF Ratio
93	72	670	104	1099	100	5.1	38.37	12.8	107	4.73	127

- Top \$B

Ranking among Non-parent bulls		
Top 1% \$B	Top 1% Marb	Top 10% CW
Top 1% \$QG	Top 1% RE	Top 10% \$YG
Top 1% \$G	Top 3% Milk	



MURCIELAGO INGENUITY 2084
Lot 7

Maternal Brother to Lot 3

Murcielago

Murcielago 5050 ND 2015

8 Farms Birth date: 08/03/2012 Bull: 17533149 DDC Tattoo: 2015

#B/R New Design 036 #VDAR New Trend 315
 #+GAR New Design 5050 B/R Blackcap Empress 76
 13728513 +GAR Precision 706 #GAR Precision 1680
 +GAR Ext 2114

#Sitz Upward 307R #Connealy Onward
 +Murcielago Blackbird 0163 Sitz Henrietta Pride 81M
 16995626 +Murcielago Blackbird 7213 #+SS Objective T510 0T26
 +Triple E Blackbird 1018

\$W	+32.15
\$F	+65.15
\$G	+36.73
\$B	+95.12

CED	BW	WW	YW	Milk	CW	Marb	RE	SC	Doc		
+10	+1.3	+69	+123	+38	+46	+0.56	+0.96	+0.61	+25		
ADG Ratio	BW	Adj. WW Ratio	WW Ratio	Adj. YW Ratio	YW Ratio	Frame	SC	Adj. RE Ratio	RE Ratio	Adj. IMF Ratio	IMF Ratio
101	65	749	116	1216	111	6.2	35.3	12.5	104	2.09	56

- Top WW
- Third highest YW

Ranking among Non-parent bulls		
Top 1% WW	Top 1% \$F	Top 4% CW
Top 1% YW	Top 2% \$B	
Top 1% Milk	Top 3% Milk	

Murcielago

Murcielago Mandate 2016

9 Farms Birth date: 08/03/2012 Bull: +17534395 DDP Tattoo: 2016

#+SS Objective T510 0T26 #SS Traveler 6807 T510
 SydGen Mandate 6079 SS Miss Rita R011 7R8
 15337433 SydGen Gina 4235 +SAF Focus J30
 Inniway Ms New Design 2011

#GAR Predestined #B/R New Design 036
 +Three Trees Barbara S1602 #+GAR Ext 4206
 15369872 +Three Trees Barbara 1420 #JLB Exacto 416
 #Sitz Barbara Perfection 1882

\$W	+30.54
\$F	+51.85
\$G	+39.49
\$B	+83.74

CED	BW	WW	YW	Milk	CW	Marb	RE	SC	Doc		
+6	+1.9	+59	+109	+32	+30	+0.86	+0.31	+1.05	+2		
ADG Ratio	BW	Adj. WW Ratio	WW Ratio	Adj. YW Ratio	YW Ratio	Frame	SC	Adj. RE Ratio	RE Ratio	Adj. IMF Ratio	IMF Ratio
98	71	685	105	1131	105	5.6	37.8	10.4	100	3.91	105

Ranking among Non-parent bulls		
Top 4% YW	Top 10% \$B	Top 10% WW
Top 4% \$F	Top 10% \$QG	
Top 5% Milk	Top 10% Marb	

PERFORMANCE LEADERS



MURCIELAGO OBJECTIVE 2087
Lot 10

Murcielago Objective 2087

10 Farms Birth date: 08/23/2012 Bull: 17536168 DDF Tattoo: 2087

#SS Traveler 6807 T510 #DHD Traveler 6807
 #+SS Objective T510 0T26 #+SS Miss Hi Spade A114
 13776378 SS Miss Rita R011 7R8 SS Rito Rito R76 R011
 SS Miss Ultress U56

#GAR Predestined #B/R New Design 036
 #Murcielago Young Lucy 7424 #+GAR Ext 4206
 16201070 +Clifton Young Lucy 3013 #GAR Precision 1680
 B/R Young Lucy 821

\$W	+34.09
\$F	+47.82
\$G	+52.21
\$B	+87.86

CED	BW	WW	YW	Milk	CW	Marb	RE	SC	Doc		
+10	+0.9	+62	+107	+28	+22	+1.2	+0.72	+0.12	+9		
ADG Ratio	BW	Adj. WW	WW Ratio	Adj. YW	YW Ratio	Frame	SC	Adj. RE	RE Ratio	Adj. IMF	IMF Ratio
96	69	728	113	1152	105	5.2	34.44	11.8	97	6.04	163

- Third highest IMF

Ranking among Non-parent bulls		
Top 1% \$G	Top 3% WW	Top 10% \$F
Top 1% \$QG	Top 5% YW	Top 10% \$W
Top 1% Marb	Top 5% \$B	



MURCIELAGO PREDICTION 2030
Lot 11

Murcielago Prediction 2030

11 Farms Birth date: 08/08/2012 Bull: +17533237 DDF Tattoo: 2030

#GAR Predestined #B/R New Design 036
 #+GAR Prediction #+GAR Ext 4206
 15283265 +GAR Precision 191 #GAR Precision 1680
 +GAR Commitment 198

#+SS Objective T510 0T26 #SS Traveler 6807 T510
 Murcielago Rita 0174 SS Miss Rita R011 7R8
 16755930 +Murcielago Rita U209 #+Rito 112 of 2536 Rito 616
 +Ft Jepp Rita 483

\$W	+28.68
\$F	+38.78
\$G	+50.46
\$B	+90.53

CED	BW	WW	YW	Milk	CW	Marb	RE	SC	Doc		
+8	+2.3	+55	+97	+25	+27	+0.98	+0.8	+0.93	+16		
ADG Ratio	BW	Adj. WW	WW Ratio	Adj. YW	YW Ratio	Frame	SC	Adj. RE	RE Ratio	Adj. IMF	IMF Ratio
104	79	661	100	1163	100	6	37.43	12	103	4.26	117

Ranking among Non-parent bulls		
Top 2% \$G	Top 3% \$QG	Top 10% \$YG
Top 3% \$B	Top 3% \$Marb	Top 10% RE



MURCIELAGO 9M25 RITO 2154
Lot 12

Murcielago 9M25 Rito 2154

12 Farms Birth Date: 09/11/2012 Bull: 17535299 DDF Tattoo: 2154

#GAR Predestined #B/R New Design 036
 #Rito 9M25 of Rita 5F56 Pred #+GAR Ext 4206
 16340278 +Rita 5F56 of 1198 FD #CA Future Direction 5321
 +Rita 1198 of 2536 Rito 616

#Sitz Upward 307R #Connealy Onward
 Murcielago Young Lucy 9256 Sitz Henrietta Pride 81M
 16507115 +Murcielago Young Lucy 7216 #+SS Objective T510 0T26
 +Clifton Young Lucy 3013

\$W	+26.36
\$F	+51.43
\$G	+41.28
\$B	+103.47

CED	BW	WW	YW	Milk	CW	Marb	RE	SC	Doc		
+5	+4.5	+64	+111	+34	+55	+0.85	+0.93	+2.3	+11		
ADG Ratio	BW	Adj. WW	WW Ratio	Adj. YW	YW Ratio	Frame	SC	Adj. RE	RE Ratio	Adj. IMF	IMF Ratio
102	88	727	113	1159	106	5.6	43.04	12.9	108	3.27	88

- Third highest \$B

Ranking among Non-parent bulls			
Top 1% \$B	Top 2% Milk	Top 4% RE	Top 10% \$G
Top 1% SC	Top 2% CW	Top 4% \$F	Top 10% \$QG
Top 2% WN	Top 3% YW	Top 10% Marb	

5050 SONS

Murcielago

Murcielago 5050 ND 2009

13 Farms

Birth date: 08/01/2012 Bull: +17534666 DDC Tattoo: 2009

#B/R New Design 036
#+GAR New Design 5050
13728513 +GAR Precision 706

#VDAR New Trend 315
B/R Blackcap Empress 76
#GAR Precision 1680
+GAR Ext 2114

#+SS Objective T510 0T26
+Murcielago Blackcap X114
16755933 +Murcielago Blackcap U100

#SS Traveler 6807 T510
SS Miss Rita R011 7R8
#GAR Predestined
+VT 1407 New Design Z38

\$W	+27.93
\$F	+50.78
\$G	+49.86
\$B	+91.18

CED	BW	WW	YW	Milk	CW	Marb	RE	SC	Doc		
+12	+1.1	+56	+107	+30	+27	+0.99	+1.01	+0.6	+23		
ADG Ratio	BW	Adj. WW Ratio	Adj. YW Ratio	YW Ratio	Frame	SC	Adj. RE Ratio	Adj. IMF Ratio	IMF Ratio		
126	72	663	100	1122	100	6	37.21	12.1	103	2.98	82

- Top ADG
- Fifth highest CED

Ranking among Non-parent bulls			
Top 2% RE	Top 3% \$QG	Top 5% YW	Top 10% \$YG
Top 2% \$G	Top 3% \$B	Top 5% \$ F	
Top 3% Marb	Top 5% CED	Top 10% Milk	

Murcielago

Murcielago 5050 ND 2008

14 Farms

Birth date: 08/01/2012 Bull: +17534666 DDC Tattoo: 2008

#B/R New Design 036
#+GAR New Design 5050
13728513 +GAR Precision 706

#VDAR New Trend 315
B/R Blackcap Empress 76
#GAR Precision 1680
+GAR Ext 2114

#+B/R Ambush 28
+Murcielago Everelda 045
16687289 +Castle Hill Everelda C506

#Rockn D Ambush 1531
+B/R Ruby of Tiffany 8250
#B/R New Design 323
+Sitz Everelda Entense 023

\$W	+29.66
\$F	+40.00
\$G	+62.60
\$B	+98.74

CED	BW	WW	YW	Milk	CW	Marb	RE	SC	Doc		
+7	+2	+55	+98	+29	+33	+1.09	+0.96	+0.09	+25		
ADG Ratio	BW	Adj. WW Ratio	Adj. YW Ratio	YW Ratio	Frame	SC	Adj. RE Ratio	Adj. IMF Ratio	IMF Ratio		
117	67	622	100	1094	100	5.3	34.21	10.5	90	3.74	103

- Third highest ADG

Ranking among Non-parent bulls			
Top 1% \$B	Top 2% Marb		
Top 1% \$G	Top 3% RE		
Top 1% \$QG	Top 10% YG		

Murcielago

Murcielago 5050 ND 2043

15 Farms

Birth date: 08/01/2012 Bull: +17534666 DDF Tattoo: 2043

#B/R New Design 036
#+GAR New Design 5050
13728513 +GAR Precision 706

#VDAR New Trend 315
B/R Blackcap Empress 76
#GAR Precision 1680
+GAR Ext 2114

#+SS Objective T510 0T26
+Murcielago Rita 0205
16995547 +CSP Rita T366

#SS Traveler 6807 T510
SS Miss Rita R011 7R8
#N Bar Emulation EXT
+Davis Rita 4001

\$W	+26.79
\$F	+45.43
\$G	+51.81
\$B	+91.48

CED	BW	WW	YW	Milk	CW	Marb	RE	SC	Doc		
+9	+2.2	+54	+102	+35	+26	+1.01	+1.01	+0.38	+21		
ADG Ratio	BW	Adj. WW Ratio	Adj. YW Ratio	YW Ratio	Frame	SC	Adj. RE Ratio	Adj. IMF Ratio	IMF Ratio		
101	71	653	101	1123	103	5	35.82	12.7	106	5.68	153

- Fifth highest IMF

Ranking among Non-parent bulls			
Top 1% \$G	Top 2% RE	Top 5% \$YG	
Top 2% \$QG	Top 3% Marb	Top 10% \$F	
Top 2% Milk	Top 3% \$B		

Murcielago

Murcielago 5050 ND 2035

16 Farms

Birth date: 08/01/2012 Bull: +17534666 DDP Tattoo: 2035

#B/R New Design 036
#+GAR New Design 5050
13728513 +GAR Precision 706

#VDAR New Trend 315
B/R Blackcap Empress 76
#GAR Precision 1680
+GAR Ext 2114

#Sitz Upward 307R
+Murcielago Blackbird X150
16995631 +Murcielago Blackbird 721

#Connealy Onward
Sitz Henrietta Pride 81M
#+SS Objective T510 0T26
+Triple E Blackbird 1018

\$W	+21.44
\$F	+69.44
\$G	+33.38
\$B	+94.14

CED	BW	WW	YW	Milk	CW	Marb	RE	SC	Doc		
+4	+4.1	+66	+125	+38	+49	+0.44	+0.98	+0.99	+25		
ADG Ratio	BW	Adj. WW Ratio	Adj. YW Ratio	YW Ratio	Frame	SC	Adj. RE Ratio	Adj. IMF Ratio	IMF Ratio		
114	84	742	115	1292	118	6.1	37.49	12.9	108	1.76	47

- Top YW
- Second highest WW

Ranking among Non-parent bulls			
Top 1% WN	Top 1% \$F	Top 3% RE	
Top 1% YW	Top 2% \$B		
Top 1% Milk	Top 3% CW		

Murcielago

Murcielago 5050 ND 2044

17 Farms

Birth date: 08/01/2012 Bull: +17534666 DDF Tattoo: 2044

#B/R New Design 036
#+GAR New Design 5050
13728513 +GAR Precision 706

#VDAR New Trend 315
B/R Blackcap Empress 76
#GAR Precision 1680
+GAR Ext 2114

#+SS Objective T510 0T26
Murcielago Rita 9251
16507114 +Murcielago Rita T006

#SS Traveler 6807 T510
SS Miss Rita R011 7R8
#GAR Predestined
+Davis Rita 4001

\$W	+32.47
\$F	+46.28
\$G	+45.35
\$B	+85.96

CED	BW	WW	YW	Milk	CW	Marb	RE	SC	Doc		
+10	+1.3	+60	+105	+37	+27	+0.86	+0.8	+0.14	+23		
ADG Ratio	BW	Adj. WW Ratio	Adj. YW Ratio	YW Ratio	Frame	SC	Adj. RE Ratio	Adj. IMF Ratio	IMF Ratio		
93	69	739	114	1155	106	6	34.12	10.9	91	3.31	89

- Fourth highest WW

Ranking among Non-parent bulls			
Top 1% Milk	Top 10% YW	Top 10% \$F	
Top 5% WN	Top 10% Marb	Top 10% \$QG	
Top 5% \$G	Top 10% RE	Top 10% \$B	

Murcielago

Murcielago 5050 ND 2124

18 Farms

Birth date: 09/06/2012 Bull: 17533154 DDC Tattoo: 2124

#B/R New Design 036
#+GAR New Design 5050
13728513 +GAR Precision 706

#VDAR New Trend 315
B/R Blackcap Empress 76
#GAR Precision 1680
+GAR Ext 2114

#+SS Objective T510 0T26
Murcielago Blackbird 0153
16755936 +Whitstone Blackbird W324

#SS Traveler 6807 T510
SS Miss Rita R011 7R8
#N Bar Emulation EXT
#TC Blackbird 7049

\$W	+30.50
\$F	+46.48
\$G	+44.54
\$B	+85.19

CED	BW	WW	YW	Milk	CW	Marb	RE	SC	Doc		
+10	+1.4	+57	+104	+34	+26	+0.7	+0.88	-0.39	+21		
ADG Ratio	BW	Adj. WW Ratio	Adj. YW Ratio	YW Ratio	Frame	SC	Adj. RE Ratio	Adj. IMF Ratio	IMF Ratio		
99	71	684	106	1150	105	5.1	30.89	12.5	104	3.1	84

Ranking among Non-parent bulls			
Top 2% Milk	Top 10% YW	Top 10% \$YG	
Top 5% RE	Top 10% \$F	Top 10% \$B	
Top 10% WN	Top 10% \$G		

5050 SONS

Murcielago

Murcielago 5050 ND 2129

19 Farms Birth date: 09/10/2012 Bull: 17533162 DDF Tattoo: 2129

#B/R New Design 036 #VDAR New Trend 315
 #+GAR New Design 5050 B/R Blackcap Empress 76
 13728513 +GAR Precision 706 #GAR Precision 1680
 +GAR Ext 2114

#+SS Objective T510 0T26 #SS Traveler 6807 T510
 +Murcielago Everelda 013 SS Miss Rita R011 7R8
 16686431 +Castle Hill Everelda C506 #B/R New Design 323
 +Sitz Everelda Entense 023

\$W	+27.86
\$F	+41.43
\$G	+63.49
\$B	+87.29

CED	BW	WW	YW	Milk	CW	Marb	RE	SC	Doc		
+9	+1.7	+52	+98	+33	+21	+1.05	+1.04	+0.15	+23		
ADG Ratio	BW	Adj. WW	WW Ratio	Adj. YW	YW Ratio	Frame	SC	Adj. RE	RE Ratio	Adj. IMF	IMF Ratio
105	71	645	100	1112	102	5	33.01	13.1	109	5.04	136

• Fifth largest REA

Ranking among Non-parent bulls		
Top 1% \$G	Top 2% \$QG	Top 5% \$B
Top 2% Marb	Top 3% \$YG	
Top 2% RE	Top 4% Milk	

Murcielago

Murcielago 5050 ND 2080

20 Farms Birth date: 08/20/2012 Bull: 17533166 DDF Tattoo: 2080

#B/R New Design 036 #VDAR New Trend 315
 #+GAR New Design 5050 B/R Blackcap Empress 76
 13728513 +GAR Precision 706 #GAR Precision 1680
 +GAR Ext 2114

B/R 65R Genesis #CA Future Direction 5321
 +Murcielago Blackcap U201 B/R Blackcap Empress 127
 16755933 +VT 1407 New Design Z38 #Bon View New Design 1407
 +GAR Plowman G240

\$W	+30.15
\$F	+39.73
\$G	+50.82
\$B	+91.01

CED	BW	WW	YW	Milk	CW	Marb	RE	SC	Doc		
+12	+0.9	+53	+97	+30	+27	+1.09	+0.99	-0.55	+29		
ADG Ratio	BW	Adj. WW	WW Ratio	Adj. YW	YW Ratio	Frame	SC	Adj. RE	RE Ratio	Adj. IMF	IMF Ratio
88	64	652	101	1046	96	5.5	30	12.3	103	4.37	118

Ranking among Non-parent bulls		
Top 1% \$QG	Top 2% \$G	Top 10% Milk
Top 2% Marb	Top 3% \$B	
Top 2% RE	Top 5% CED	

Murcielago

Murcielago 5050 ND 2006

21 Farms Birth date: 08/01/2012 Bull: +17534665 DDC Tattoo: 2006

#B/R New Design 036 #VDAR New Trend 315
 #+GAR New Design 5050 B/R Blackcap Empress 76
 13728513 +GAR Precision 706 #GAR Precision 1680
 +GAR Ext 2114

#+SS Objective T510 0T26 #SS Traveler 6807 T510
 +Murcielago Blackcap X114 SS Miss Rita R011 7R8
 16755933 +Murcielago Blackcap U100 #GAR Predestined
 +VT 1407 New Design Z38

\$W	+27.93
\$F	+50.78
\$G	+49.05
\$B	+86.97

CED	BW	WW	YW	Milk	CW	Marb	RE	SC	Doc		
+12	+1.1	+56	+107	+30	+24	+0.99	+0.96	+0.15	+23		
ADG Ratio	BW	Adj. WW	WW Ratio	Adj. YW	YW Ratio	Frame	SC	Adj. RE	RE Ratio	Adj. IMF	IMF Ratio
114	71	557	100	1071	100	6.3	34.21	11	94	3.04	84

• Fourth highest CED

Ranking among Non-parent bulls		
Top 3% Marb	Top 3% \$G	Top 5% \$F
Top 3% RE	Top 5% CED	Top 10% Milk
Top 3% \$QG	Top 5% YW	Top 10% \$B

Murcielago

Murcielago 5050 ND 2110

22 Farms Birth date: 08/28/2012 Bull: 17533159 DDF Tattoo: 2110

#B/R New Design 036 #VDAR New Trend 315
 #+GAR New Design 5050 B/R Blackcap Empress 76
 13728513 +GAR Precision 706 #GAR Precision 1680
 +GAR Ext 2114

#+SS Objective T510 0T26 #SS Traveler 6807 T510
 +Riverbend Lady X1226 SS Miss Rita R011 7R8
 16692967 +Riverbend Lady R637 #+Wulffs EXT 6106
 +Ideal 4465 of 6807 4286

\$W	+28.30
\$F	+44.47
\$G	+40.73
\$B	+81.55

CED	BW	WW	YW	Milk	CW	Marb	RE	SC	Doc		
+9	+2.3	+56	+102	+32	+27	+0.53	+0.98	-0.34	+19		
ADG Ratio	BW	Adj. WW	WW Ratio	Adj. YW	YW Ratio	Frame	SC	Adj. RE	RE Ratio	Adj. IMF	IMF Ratio
95	65	654	101	1091	100	5	31.6	11.9	99	2.38	64

Ranking among Non-parent bulls		
Top 3% RE	Top 3% \$YG	Top 5% Milk

Murcielago

Murcielago 5050 ND 2106

23 Farms Birth date: 08/28/2012 Bull: 17533173 DDF Tattoo: 2106

#B/R New Design 036 #VDAR New Trend 315
 #+GAR New Design 5050 B/R Blackcap Empress 76
 13728513 +GAR Precision 706 #GAR Precision 1680
 +GAR Ext 2114

#Hyline Travel Agent #QAS Traveler 23-4
 Agent of Conanga 6794 Hyline Pride Lucy 9043
 12797558 Aleza of Conanga #Emulation N Bar 5522
 Alice of Conanga

\$W	+26.39
\$F	+29.35
\$G	+33.50
\$B	+70.00

CED	BW	WW	YW	Milk	CW	Marb	RE	SC	Doc		
+5	+2.7	+47	+86	+29	+24	+0.42	+0.78	-0.13	+16		
ADG Ratio	BW	Adj. WW	WW Ratio	Adj. YW	YW Ratio	Frame	SC	Adj. RE	RE Ratio	Adj. IMF	IMF Ratio
89	77	589	91	1008	92	5.1	33.99	12.4	103	2.97	80

Ranking among Non-parent bulls		
Top 10% RE		

Murcielago

Murcielago 5050 ND 2020

24 Farms Birth date: 08/03/2012 Bull: +17533169 DDC Tattoo: 2020

#B/R New Design 036 #VDAR New Trend 315
 #+GAR New Design 5050 B/R Blackcap Empress 76
 13728513 +GAR Precision 706 #GAR Precision 1680
 +GAR Ext 2114

#Connealy Onward #Connealy Lead On
 +SBP Blackcap 8195 Altune of Conanga 6104
 16001492 +VAR Blackcap 5042 #+Summitcrest High Prime 0H29
 +GAR New Design 1200

\$W	+26.60
\$F	+41.91
\$G	+46.58
\$B	+92.97

CED	BW	WW	YW	Milk	CW	Marb	RE	SC	Doc		
+8	+1.8	+51	+98	+32	+33	+0.76	+0.98	+0.81	+24		
ADG Ratio	BW	Adj. WW	WW Ratio	Adj. YW	YW Ratio	Frame	SC	Adj. RE	RE Ratio	Adj. IMF	IMF Ratio
93	71	616	100	1048	100	5.1	37.77	12.2	104	2.45	67

Ranking among Non-parent bulls		
Top 2% \$B	Top 4% \$YG	Top 10% \$QG
Top 3% RE	Top 5% Milk	
Top 4% \$G	Top 10% Marb	

PREDICTION SONS

Murcielago

Murcielago Prediction 2076

25 Farms Birth date: 08/19/2012 Bull: 17533251 DDF Tattoo: 2076

#GAR Predestined #B/R New Design 036
 +GAR Prediction #+GAR Ext 4206
 15283265 +GAR Precision 191 #GAR Precision 1680
 +GAR Commitment 198

#N Bar Emulation EXT #Emulation N Bar 5522
 +Murcielago Blackcap U180 N Bar Primrose 2424
 16246135 +VT 1407 New Design Z38 #Bon View New Design 1407
 +GAR Plowman G240

CED	BW	WW	YW	Milk	CW	Marb	RE	SC	Doc		
+12	+0.3	+48	+89	+19	+26	+1.12	+0.78	+0.6	+10		
ADG Ratio	BW	Adj. WW	WW Ratio	Adj. YW	YW Ratio	Frame	SC	Adj. RE	RE Ratio	Adj. IMF	IMF Ratio
100	60	614	95	1056	97	5.1	34.47	13.3	111	6.78	183

• Top IMF • Fourth Largest REA • Fourth lowest BW EPD

Ranking among Non-parent bulls			
Top 1% QG	Top 4% \$B		
Top 2% Marb	Top 5% CED		
Top 2% \$G	Top 10% RE		

Murcielago

Murcielago Prediction 2079

26 Farms Birth date: 08/19/2012 Bull: 17533248 Tattoo: 2079

#GAR Predestined #B/R New Design 036
 +GAR Prediction #+GAR Ext 4206
 15283265 +GAR Precision 191 #GAR Precision 1680
 +GAR Commitment 198

Ideal 4355 of 0T26 2440 #+SS Objective T510 0T26
 Murcielago Blackcap 9280 Ideal 2440 of 7407 7275
 16507119 HVF Blackcap 435 #White Oak Precise 6002
 +Generation Traveler 9032

CED	BW	WW	YW	Milk	CW	Marb	RE	SC	Doc		
+9	+1.1	+53	+93	+25	+33	+0.85	+0.64	+0.44	+11		
ADG Ratio	BW	Adj. WW	WW Ratio	Adj. YW	YW Ratio	Frame	SC	Adj. RE	RE Ratio	Adj. IMF	IMF Ratio
107	63	652	101	1116	102	5.5	33.81	11.3	94	5.08	137

Ranking among Non-parent bulls			
Top 3% \$B	Top 10% \$G		
Top 10% Marb	Top 10% \$QG		

Murcielago

Murcielago Prediction 2155

27 Farms Birth date: 09/11/2012 Bull: 17533243 Tattoo: 2155

#GAR Predestined #B/R New Design 036
 +GAR Prediction #+GAR Ext 4206
 15283265 +GAR Precision 191 #GAR Precision 1680
 +GAR Commitment 198

21AR Roundup 7005 HARB Pendleton 765 JH
 Murcielago Rito Lady 9278 21AR Blackbird Lady F645
 16518545 +Murcielago Rito Lady 7238 #+Wulfis EXT 6106
 +HA Rito Lady 4167

CED	BW	WW	YW	Milk	CW	Marb	RE	SC	Doc		
+8	+1.2	+56	+92	+22	+35	+0.57	+0.82	+0.91	+14		
ADG Ratio	BW	Adj. WW	WW Ratio	Adj. YW	YW Ratio	Frame	SC	Adj. RE	RE Ratio	Adj. IMF	IMF Ratio
93	68	702	109	1104	101	5.9	36.04	12.8	107	2.88	78

Ranking among Non-parent bulls			
Top 10% \$B	Top 10% RE		

Murcielago

Murcielago Prediction 2201

28 Farms Birth date: 09/15/2012 Bull: 17569223 Tattoo: 2201

#GAR Predestined #B/R New Design 036
 +GAR Prediction #+GAR Ext 4206
 15283265 +GAR Precision 191 #GAR Precision 1680
 +GAR Commitment 198

HARB Pendleton 765 JH #+SAV Final Answer 0035
 Murcielago Rita 955 HARB Black Lady 375 JH
 16579985 Murcielago Rita 7126 +Circle G Bandit 418
 Murcielago Rita 550

CED	BW	WW	YW	Milk	CW	Marb	RE	SC	Doc		
+6	+2.6	+48	+86	+29	+35	+0.66	+0.59	+0.85			
ADG Ratio	BW	Adj. WW	WW Ratio	Adj. YW	YW Ratio	Frame	SC	Adj. RE	RE Ratio	Adj. IMF	IMF Ratio
99	77	646	100	1049	96	5.1	35.34	11.4	95	3.25	88

Ranking among Non-parent bulls			
Top 10% \$B			

Murcielago

Murcielago Prediction 2138

29 Farms Birth date: 09/10/2012 Bull: 17533246 DDF Tattoo: 2138

#GAR Predestined #B/R New Design 036
 +GAR Prediction #+GAR Ext 4206
 15283265 +GAR Precision 191 #GAR Precision 1680
 +GAR Commitment 198

Gardens Prime Star #+N Bar Prime Time D806
 Murcielago Everelda 9300 +Green Garden Jilt C242 S1
 16513312 +Riverbend Everelda R514 #B/R New Dimension 7127
 +Three Trees Entense 567G

CED	BW	WW	YW	Milk	CW	Marb	RE	SC	Doc		
+9	+2.1	+49	+86	+27	+30	+0.71	+0.75	+1.23	+9		
ADG Ratio	BW	Adj. WW	WW Ratio	Adj. YW	YW Ratio	Frame	SC	Adj. RE	RE Ratio	Adj. IMF	IMF Ratio
97	71	670	104	1075	98	5.4	36.01	11.8	98	2.64	71

REFERENCE SIRE



GAR PREDICTION

PREDICTION AND 9M25 SONS

Murcielago

Murcielago Prediction 2088

30 Farms Birth date: 08/23/2012 Bull: 17533247 DDF Tattoo: 2088

#GAR Predestined #B/R New Design 036
 +GAR Prediction #+GAR Ext 4206
 15283265 +GAR Precision 191 #GAR Precision 1680
 +GAR Commitment 198

#+SS Objective T510 0T26 #SS Traveler 6807 T510
 Daltons Primrose 9270 SS Miss Rita R011 7R8
 16507379 +Daltons Primrose 3213 #BCC Bushwacker 41-93
 +PARB Primrose T72

\$W	+36.36
\$F	+32.38
\$G	+45.30
\$B	+78.45

CED	BW	WW	YW	Milk	CW	Marb	RE	SC	Doc		
+7	+2.2	+61	+94	+25	+21	+0.74	+0.71	+0.52	+15		
ADG Ratio	BW	Adj. WW	WW Ratio	Adj. YW	YW Ratio	Frame	SC	Adj. RE	RE Ratio	Adj. IMF	IMF Ratio
75	73	708	110	1041	95	5.1	33.44	11.5	96	3.69	99

Ranking among Non-parent bulls
 Top 4% WN Top 5% \$W
 Top 5% \$G Top 10% \$QG
 Top 10% \$YG

Murcielago

Murcielago Prediction 2099

31 Farms Birth date: 08/27/2012 Bull: 17533240 Tattoo: 2099

#GAR Predestined #B/R New Design 036
 +GAR Prediction #+GAR Ext 4206
 15283265 +GAR Precision 191 #GAR Precision 1680
 +GAR Commitment 198

+BT Crossover 758N #CA Future Direction 5321
 +Murcielago Rita 923 BT Royal Pride 237G
 16738138 +Whitestone Rita 449L #DHD Traveler 6807
 +Rita 3X11 of Rita 0FB4 EXT

\$W	+25.52
\$F	+25.17
\$G	+38.61
\$B	+77.42

CED	BW	WW	YW	Milk	CW	Marb	RE	SC	Doc		
+7	+2.4	+46	+82	+20	+26	+0.49	+0.8	+0.44	+15		
ADG Ratio	BW	Adj. WW	WW Ratio	Adj. YW	YW Ratio	Frame	SC	Adj. RE	RE Ratio	Adj. IMF	IMF Ratio
107	72	563	87	1019	93	5.7	34.23	11.4	95	2.56	69

Ranking among Non-parent bulls
 Top 4% \$YG Top 10% RE Top 10% Fat

Murcielago

Murcielago 9M25 Rito 2052

32 Farms Birth date: 08/15/2012 Bull: 17532886 DDF Tattoo: 2052

#GAR Predestined #B/R New Design 036
 +Rito 9M25 of Rita 5F56 Pred #+GAR Ext 4206
 16340278 +Rita 5F56 of 1198 FD #CA Future Direction 5321
 +Rita 1198 of 2536 Rito 616

#Connealy Power One #CRA Bextor 872 5205 608
 +TCF Primrose 351N-7028 +Britney of Conanga
 15750346 +Falcon Primrose 351N #SAF 598 Bando 5175
 Summitcrest Primrose 2J02

\$W	+33.57
\$F	+34.42
\$G	+42.22
\$B	+94.09

CED	BW	WW	YW	Milk	CW	Marb	RE	SC	Doc		
+13	+0.4	+54	+93	+31	+40	+0.82	+0.89	+0.74	+6		
ADG Ratio	BW	Adj. WW	WW Ratio	Adj. YW	YW Ratio	Frame	SC	Adj. RE	RE Ratio	Adj. IMF	IMF Ratio
98	67	664	103	1114	102	5.6	35.16	14	117	2.91	78

- Largest REA • Fifth lowest BW EPD

Ranking among Non-parent bulls
 Top 2% \$B Top 10% Milk Top 10% \$G
 Top 3% CED Top 10% CW Top 10% \$QG
 Top 5% RE Top 10% Marb

REFERENCE SIRE



RITO 9M25 OF RITA 5F56 PRED

Murcielago

Murcielago 9M25 Rito 2327

33 Farms Birth date: 10/08/2012 Bull: 17535298 DDC Tattoo: 2327

#GAR Predestined #B/R New Design 036
 +Rito 9M25 of Rita 5F56 Pred #+GAR Ext 4206
 16340278 +Rita 5F56 of 1198 FD #CA Future Direction 5321
 +Rita 1198 of 2536 Rito 616

Riverbend Mile High 3718 #Bon View New Design 1407
 +Murcielago Forever Lady 8238 #+GAR Precision 1919
 16834882 +Wellington Forever Lady 63W2 #Sitz Traveler 8180
 +Toebben Forever Lady 102G

\$W	+32.78
\$F	+30.41
\$G	+42.51
\$B	+95.57

CED	BW	WW	YW	Milk	CW	Marb	RE	SC	Doc		
+9	+2.3	+55	+90	+31	+42	+0.98	+0.6	+1.17	+10		
ADG Ratio	BW	Adj. WW	WW Ratio	Adj. YW	YW Ratio	Frame	SC	Adj. RE	RE Ratio	Adj. IMF	IMF Ratio
86	72	671	104	1025	94	5.2	37.07	10.8	90	4.15	112

Ranking among Non-parent bulls
 Top 2% \$B Top 10% Milk
 Top 3% Marb Top 10% CW
 Top 3% \$QG Top 10% \$G

Murcielago

Murcielago 9M25 Rito 2261

34 Farms Birth date: 09/21/2012 Bull: 17535311 DDF Tattoo: 2261

#GAR Predestined #B/R New Design 036
 +Rito 9M25 of Rita 5F56 Pred #+GAR Ext 4206
 16340278 +Rita 5F56 of 1198 FD #CA Future Direction 5321
 +Rita 1198 of 2536 Rito 616

#+Rito 2V1 of 2536 1407 #Bon View New Design 1407
 Murcielago Bessie 714 GAR Precision 2536
 15888453 Murcielago Bessie C574 Castle Hill Traveler C212
 +Castle Hill Bessie C234

\$W	+14.71
\$F	+39.45
\$G	+35.83
\$B	+92.09

CED	BW	WW	YW	Milk	CW	Marb	RE	SC	Doc		
-1	+6.2	+51	+96	+26	+46	+0.67	+0.65	+1.26			
ADG Ratio	BW	Adj. WW	WW Ratio	Adj. YW	YW Ratio	Frame	SC	Adj. RE	RE Ratio	Adj. IMF	IMF Ratio
108	98	571	88	1069	98	5.5	37.84	12.1	101	2.22	60

Ranking among Non-parent bulls
 Top 2% \$B Top 5% CW

MANDATE SONS

Murcielago

Murcielago Mandate 2045

35 Farms Birth date: 08/13/2012 Bull: 17534387 DDF Tattoo: 2045

#+SS Objective T510 OT26
SydGen Mandate 6079
15337433 SydGen Gina 4235

#SS Traveler 6807 T510
SS Miss Rita R011 7R8
+SAF Focus J30
Inniway Ms New Design 201

#Sitz Upward 307R
+Murcielago Blackbird X164
16995624 +Murcielago Blackbird 7225

#Connealy Onward
Sitz Henrietta Pride 81M
#GAR Predestined
+Triple E Blackbird 1018

\$W	+29.61
\$F	+56.82
\$G	+34.32
\$B	+87.08

CED	BW	WW	YW	Milk	CW	Marb	RE	SC	Doc		
+10	+1.8	+62	+114	+33	+39	+0.8	+0.3	+1.93	+6		
ADG Ratio	BW	Adj. WW	WW Ratio	Adj. YW	YW Ratio	Frame	SC	Adj. RE	RE Ratio	Adj. IMF	IMF Ratio
93	64	692	107	1108	101	5	40.12	11.4	95	3.56	96

Ranking among Non-parent bulls
 Top 1% SC Top 3% WN Top 10% \$B
 Top 2% YW Top 4% Milk Top 10% \$QG
 Top 2% \$F Top 10% Marb

Murcielago

Murcielago Mandate 2111

36 Farms Birth date: 08/30/2012 Bull: 17534393 Tattoo: 2111

#+SS Objective T510 OT26
SydGen Mandate 6079
15337433 SydGen Gina 4235

#SS Traveler 6807 T510
SS Miss Rita R011 7R8
+SAF Focus J30
Inniway Ms New Design 201

#GAR Retail Product
+Daltons Blackcap 88 of SF
16093625 VT 208 New Design A82

#GAR Precision 1680
+GAR Ext 4927
#+ Bon View New Design 208
+GAR Plowman G240

\$W	+23.04
\$F	+59.87
\$G	+36.60
\$B	+72.60

CED	BW	WW	YW	Milk	CW	Marb	RE	SC	Doc		
+9	+1.9	+56	+114	+29	+21	+0.67	+0.34	+1.47	+6		
ADG Ratio	BW	Adj. WW	WW Ratio	Adj. YW	YW Ratio	Frame	SC	Adj. RE	RE Ratio	Adj. IMF	IMF Ratio
115	73	626	97	1180	108	5.9	38.17	12	100	2.82	76

• Fifth highest ADG
 Ranking among Non-parent bulls
 Top 1% \$F Top 2% YW Top 5% SC

Murcielago

Murcielago Mandate 2024

37 Farms Birth date: 08/06/2012 Bull: +17534398 DDP Tattoo: 2024

#+SS Objective T510 OT26
SydGen Mandate 6079
15337433 SydGen Gina 4235

#SS Traveler 6807 T510
SS Miss Rita R011 7R8
+SAF Focus J30
Inniway Ms New Design 201

#GAR Predestined
+Three Trees Barbara S1602
15369872 +Three Trees Barbara 1420

#B/R New Design 036
#+GAR Ext 4206
#JLB Exacto 416
#Sitz Barbara Perfection 1882

\$W	+31.98
\$F	+49.01
\$G	+43.57
\$B	+81.62

CED	BW	WW	YW	Milk	CW	Marb	RE	SC	Doc		
+6	+2.7	+57	+106	+33	+24	+1.07	+0.22	+0.35	+2		
ADG Ratio	BW	Adj. WW	WW Ratio	Adj. YW	YW Ratio	Frame	SC	Adj. RE	RE Ratio	Adj. IMF	IMF Ratio
65	62	597	100	938	100	5.1	32.87	9.4	80	5.27	145

Ranking among Non-parent bulls
 Top 2% Marb Top 10% WN Top 10% \$F
 Top 2% \$QG Top 10% YW Top 10% \$G
 Top 4% Milk Top 10% \$F

REFERENCE SIRE



SYDGEN MANDATE 6079

Murcielago

Murcielago Mandate 2082

38 Farms Birth date: 08/21/2012 Bull: 17534391 DDF Tattoo: 2082

#+SS Objective T510 OT26
SydGen Mandate 6079
15337433 SydGen Gina 4235

#SS Traveler 6807 T510
SS Miss Rita R011 7R8
+SAF Focus J30
Inniway Ms New Design 201

#+Rito 112 of 2536 Rito 616
+Murcielago Blackcap U232
16486732 +VT 1407 New Design Z38

#Rito 616 of 4B20 6807
GAR Precision 2536
#Bon View New Design 1407
+GAR Plowman G240

\$W	+26.17
\$F	+55.43
\$G	+40.78
\$B	+77.28

CED	BW	WW	YW	Milk	CW	Marb	RE	SC	Doc		
+11	+1.5	+57	+111	+24	+23	+0.99	+0.17	+0.86	+7		
ADG Ratio	BW	Adj. WW	WW Ratio	Adj. YW	YW Ratio	Frame	SC	Adj. RE	RE Ratio	Adj. IMF	IMF Ratio
101	69	599	93	1079	98	5	36.04	10.2	85	4.5	121

Ranking among Non-parent bulls
 Top 2% \$F Top 3% Marb
 Top 3% \$QG Top 10% CED
 Top 3% WN Top 10% WN

Murcielago

Murcielago Mandate 2169

39 Farms Birth date: 09/17/2012 Bull: 17534388 DDF Tattoo: 2169

#+SS Objective T510 OT26
SydGen Mandate 6079
15337433 SydGen Gina 4235

#SS Traveler 6807 T510
SS Miss Rita R011 7R8
+SAF Focus J30
Inniway Ms New Design 201

#Sitz Upward 307R
Murcielago Rita 0286
16995615 +Murcielago Rita T006

#Connealy Onward
Sitz Henrietta Pride 81M
#GAR Predestined
+Davis Rita 4001

\$W	+27.70
\$F	+43.14
\$G	+36.79
\$B	+82.81

CED	BW	WW	YW	Milk	CW	Marb	RE	SC	Doc		
+12	+0.8	+51	+99	+33	+34	+0.91	+0.19	+0.88	+7		
ADG Ratio	BW	Adj. WW	WW Ratio	Adj. YW	YW Ratio	Frame	SC	Adj. RE	RE Ratio	Adj. IMF	IMF Ratio
91	57	600	93	998	91	5.1	34.74	9.9	83	4.73	127

Ranking among Non-parent bulls
 Top 4% Milk Top 5% Marb
 Top 4% \$QG Top 10% \$B
 Top 5% CED

PROTEGE SONS

Murcielago

Murcielago Protege 2005

40 Farms Birth date: 08/01/2012 Bull: +17534664 DDF Tattoo: 2005

##Rito 112 of 2536 Rito 616
+GAR-EGL Protege
15098880 LB 6807 Isabel 339

##Rito 616 of 4B20 6807
GAR Precision 2536
#DHD Traveler 6807
#LB E31 Isabel 168

#GAR Predestined
+Murcielago Blackcap U100
16201073 +VT 1407 New Design Z38

##B/R New Design 036
##GAR Ext 4206
#Bon View New Design 1407
+GAR Plowman G240

\$W	+24.86
\$F	+54.14
\$G	+46.64
\$B	+100.48

CED	BW	WW	YW	Milk	CW	Marb	RE	SC	Doc		
+10	+1.8	+57	+110	+18	+41	+1.14	+0.74	-0.09	+14		
ADG Ratio	BW	Adj. WW	WW Ratio	Adj. YW	YW Ratio	Frame	SC	Adj. RE	RE Ratio	Adj. IMF	IMF Ratio
107	70	653	100	1138	100	5.3	33.71	11.6	99	4.51	124

Ranking among Non-parent bulls
Top 1% Marb Top 3% YW Top 10% WN
Top 1% \$B Top 3% \$F
Top 1% \$QG Top 4% \$G

Murcielago

Murcielago Protege 2026

41 Farms Birth date: 08/07/2012 Bull: +17537550 DDF Tattoo: 2026

##Rito 112 of 2536 Rito 616
+GAR-EGL Protege
15098880 LB 6807 Isabel 339

##Rito 616 of 4B20 6807
GAR Precision 2536
#DHD Traveler 6807
#LB E31 Isabel 168

#GAR Predestined
+Murcielago Blackcap U100
16201073 +VT 1407 New Design Z38

##B/R New Design 036
##GAR Ext 4206
#Bon View New Design 1407
+GAR Plowman G240

\$W	+24.59
\$F	+54.14
\$G	+44.76
\$B	+100.06

CED	BW	WW	YW	Milk	CW	Marb	RE	SC	Doc		
+10	+1.8	+57	+110	+18	+43	+1.11	+0.72	+0.39	+14		
ADG Ratio	BW	Adj. WW	WW Ratio	Adj. YW	YW Ratio	Frame	SC	Adj. RE	RE Ratio	Adj. IMF	IMF Ratio
92	74	741	100	1160	100	5.9	36.9	11.6	99	4.19	115

• Third highest WW
Ranking among Non-parent bulls
Top 1% \$B Top 3% YW
Top 1% \$QG Top 3% \$F
Top 2% Marb Top 10% WN

Murcielago

Murcielago Protege 2077

42 Farms Birth date: 08/19/2012 Bull: 17532887 DDC Tattoo: 2077

##Rito 112 of 2536 Rito 616
+GAR-EGL Protege
15098880 LB 6807 Isabel 339

##Rito 616 of 4B20 6807
GAR Precision 2536
#DHD Traveler 6807
#LB E31 Isabel 168

##B/R New Dimension 7127
+Riverbend Everelda R514
14988253 + Three Trees Entense 567G

##B/R New Design 036
B/R Ruby of Tiffany 4117
#AAR New Trend
+BT Everelda Entense 76D

\$W	+27.82
\$F	+34.62
\$G	+32.13
\$B	+82.38

CED	BW	WW	YW	Milk	CW	Marb	RE	SC	Doc		
+8	+2.4	+51	+92	+28	+38	+0.4	+0.93	+0.62	+7		
ADG Ratio	BW	Adj. WW	WW Ratio	Adj. YW	YW Ratio	Frame	SC	Adj. RE	RE Ratio	Adj. IMF	IMF Ratio
102	76	601	93	1055	97	5	35.78	12.3	103	1.87	50

Ranking among Non-parent bulls
Top 4% RE Top 10% \$B

Murcielago

Murcielago Protege 2207

43 Farms Birth date: 09/16/2012 Bull: 17532889 DDC Tattoo: 2207

##Rito 112 of 2536 Rito 616
+GAR-EGL Protege
15098880 LB 6807 Isabel 339

##Rito 616 of 4B20 6807
GAR Precision 2536
#DHD Traveler 6807
#LB E31 Isabel 168

##SS Objective T510 0T26
Bent Creek Blackcap T028
15912277 +Murcielago Blackcap 5234

##SS Traveler 6807 T510
SS Miss Rita R011 7R8
#B/R New Design 036
+Castle Hill Blackcap C093

\$W	+21.73
\$F	+45.64
\$G	+46.85
\$B	+91.36

CED	BW	WW	YW	Milk	CW	Marb	RE	SC	Doc		
+7	+2.6	+51	+101	+20	+31	+1.02	+0.72	+0.59	+12		
ADG Ratio	BW	Adj. WW	WW Ratio	Adj. YW	YW Ratio	Frame	SC	Adj. RE	RE Ratio	Adj. IMF	IMF Ratio
113	80	533	83	1042	95	5.1	36.71	11.6	97	5.93	160

• Fourth highest IMF
Ranking among Non-parent bulls
Top 2% \$QG Top 4% \$G
Top 3% \$B Top 10% \$F
Top 3% Marb

Murcielago

Murcielago Daybreak 2037

44 Farms Birth date: 08/09/2012 Bull: 17534351 DDC Tattoo: 2037

##Boyd New Day 8005
MCC Daybreak
14777016 #MCC Miss Focus 134

#AAR New Trend
+SVF Forever Lady 57D
#SAF Focus of ER
+MCC Miss Chief 519

+GAR Prediction
Murcielago Bessie 0155
17003641 Murcielago Bessie 714

#GAR Predestined
+ GAR Precision 191
##Rito 2V1 of 2536 1407
Murcielago Bessie C574

\$W	+33.99
\$F	+44.54
\$G	+40.46
\$B	+84.80

CED	BW	WW	YW	Milk	CW	Marb	RE	SC	Doc		
+12	+0.3	+61	+104	+22	+32	+0.61	+0.86	+0.17			
ADG Ratio	BW	Adj. WW	WW Ratio	Adj. YW	YW Ratio	Frame	SC	Adj. RE	RE Ratio	Adj. IMF	IMF Ratio
87	58	685	106	1061	97	5.1	31.99	11.8	98	3.08	83

• Third lowest BW EPD
Ranking among Non-parent bulls
Top 4% WN Top 10% RE
Top 5% CED Top 10% \$W
Top 10% YW Top 10% \$B

Murcielago

Murcielago Daybreak 2069

45 Farms Birth date: 08/18/2012 Bull: 17534353 DDC Tattoo: 2069

##Boyd New Day 8005
MCC Daybreak
14777016 #MCC Miss Focus 134

#AAR New Trend
+SVF Forever Lady 57D
#SAF Focus of ER
+MCC Miss Chief 519

##Rito 2V1 of 2536 1407
+Murcielago Blackcap T7206
16720595 +Day Blackcap 4089

#Bon View New Design 1407
GAR Precision 2536
#Twin Valley Precision E161
#GAR Scotch Cap 867

\$W	+28.57
\$F	+41.43
\$G	+34.59
\$B	+73.71

CED	BW	WW	YW	Milk	CW	Marb	RE	SC	Doc		
+13	-0.8	+52	+98	+17	+26	+0.4	+0.89	+0.49	+10		
ADG Ratio	BW	Adj. WW	WW Ratio	Adj. YW	YW Ratio	Frame	SC	Adj. RE	RE Ratio	Adj. IMF	IMF Ratio
101	58	557	86	1007	92	5.1	34.28	12.8	107	2.3	62

• Second lowest BW EPD • Third highest CED
Ranking among Non-parent bulls
Top 3% CED Top 10% BW
Top 5% RE Top 10% YG

CALVING EASE PROSPECTS

Murcielago

Murcielago Progress 2074

46 Farms Birth date: 08/18/2012 Bull: 17533314 DDF Tattoo: 2074

#GAR Predestined #B/R New Design 036
 #GAR Progress #+GAR Ext 4206
 16290873 GAR Objective 2345 #+SS Objective T510 0T26
 +GAR 1407 New Design 2413

BC 7022 Raven 7965 #BC Marathon 7022
 +Thunderfoot Blackcap W46 OCC Blackbird 796F
 16832550 +SH Blackcap 706 491 #Bon View New Design 1407
 +GAR Precision 706

\$W	+30.46
\$F	+30.98
\$G	+52.76
\$B	+88.07

CED	BW	WW	YW	Milk	CW	Marb	RE	SC	Doc		
+15	-1.1	+46	+87	+26	+23	+1.12	+0.86	-1.07	+17		
ADG Ratio	BW	Adj. WW	WW Ratio	Adj. YW	YW Ratio	Frame	SC	Adj. RE	RE Ratio	Adj. IMF	IMF Ratio
100	60	580	90	1041	95	5	28.44	12.9	108	4.44	120

• Top CED • Lowest BW EPD

Ranking among Non-parent bulls		
Top 1% CED	Top 2% Marb	Top 10% RE
Top 1% \$G	Top 4% BW	Top 10% \$YG
Top 1% \$QG	Top 5% \$B	

REFERENCE SIRE



GAR PROGRESS

Murcielago

Murcielago Ingenuity 2166

47 Farms Birth date: 09/17/2012 Bull: 17533330 DDC Tattoo: 2166

#+GAR New Design 5050 #B/R New Design 036
 #GAR Ingenuity #+GAR Precision 706
 16497066 GAR Objective 1067 #+SS Objective T510 0T26
 GAR Retail Product 2195

#Sitz Upward 307R #Connealy Onward
 Murcielago Everelda 0215 Sitz Henrietta Pride 81M
 16995638 +Riverbend Everelda R514 #B/R New Dimension 7127
 +Three Trees Entense 567G

\$W	+28.73
\$F	+47.74
\$G	+40.48
\$B	+100.85

CED	BW	WW	YW	Milk	CW	Marb	RE	SC	Doc		
+8	+1.8	+57	+106	+40	+52	+0.62	+1.15	+0.79	+19		
ADG Ratio	BW	Adj. WW	WW Ratio	Adj. YW	YW Ratio	Frame	SC	Adj. RE	RE Ratio	Adj. IMF	IMF Ratio
104	69	689	107	1158	106	5.1	34.74	13.7	114	1.69	46

• Second largest REA

Ranking among Non-parent bulls		
Top 1% Milk	Top 2% CW	Top 10% \$F
Top 1% \$B	Top 10% WN	
Top 1% RE	Top 10% YW	

Murcielago

Murcielago Objective 2027

48 Farms Birth date: 08/07/2012 Bull: +17532885 DDF Tattoo: 2027

#SS Traveler 6807 T510 #DHD Traveler 6807
 #+SS Objective T510 0T26 #SS Miss Hi Spade A114
 13776378 SS Miss Rita R011 7R8 SS Rito Rito R76 R011
 SS Miss Ultrass U56

#GAR Predestined #B/R New Design 036
 #Murcielago Young Lucy 7424 #+GAR Ext 4206
 16201070 +Clifton Young Lucy 3013 #GAR Precision 1680
 B/R Young Lucy 821

\$W	+32.33
\$F	+43.98
\$G	+52.64
\$B	+86.79

CED	BW	WW	YW	Milk	CW	Marb	RE	SC	Doc		
+9	+0.5	+57	+102	+28	+21	+1.09	+0.9	-0.39	+9		
ADG Ratio	BW	Adj. WW	WW Ratio	Adj. YW	YW Ratio	Frame	SC	Adj. RE	RE Ratio	Adj. IMF	IMF Ratio
88	71	668	102	1074	99	5.1	32.43	12.2	117	5.05	135

Ranking among Non-parent bulls		
Top 1% \$G	Top 4% RE	Top 10% \$YG
Top 1% \$QG	Top 10% WN	Top 10% \$B
Top 2% Marb	Top 10% YW	

REFERENCE SIRE



SS OBJECTIVE T510 0T26

Murcielago

Murcielago Objective 2034

49 Farms Birth date: 08/09/2012 Bull: +17536167 DDF Tattoo: 2034

#SS Traveler 6807 T510 #DHD Traveler 6807
 #+SS Objective T510 0T26 #SS Miss Hi Spade A114
 13776378 SS Miss Rita R011 7R8 SS Rito Rito R76 R011
 SS Miss Ultrass U56

#+GAR New Design 5050 #B/R New Design 036
 Murcielago Young Lucy X168 +GAR Precision 706
 16738136 + Murcielago Young Lucy 7332 BC 7022 Raven 7965
 +Clifton Young Lucy 3013

\$W	+31.84
\$F	+50.86
\$G	+49.73
\$B	+78.73

CED	BW	WW	YW	Milk	CW	Marb	RE	SC	Doc		
+11	+1.2	+61	+109	+29	+16	+0.86	+0.99	-0.5			
ADG Ratio	BW	Adj. WW	WW Ratio	Adj. YW	YW Ratio	Frame	SC	Adj. RE	RE Ratio	Adj. IMF	IMF Ratio
113	54	508	100	1078	100	5.7	31.96	11.8	101	3.37	93

Ranking among Non-parent bulls		
Top 2% RE	Top 4% WN	Top 10% CED
Top 2% \$G	Top 4% YW	Top 10% Marb
Top 3% \$YG	Top 5% \$F	Top 10% \$QG

MULTI-TRAIT PROSPECTS

Murcielago

Murcielago Ultimate 2288

50 Farms

Birth date: 09/24/2012 Bull: 17534390 DDF Tattoo: 2288

#+SS Objective T510 0T26
GAR Ultimate
15464043 GAR Load Up 1314

#SS Traveler 6807 T510
SS Miss Rita R011 7R8
RAB-GAR Load Up 4049J
+GAR New Design 80

#Sitz Upward 307R
+Murcielago Blackbird 0200
16995617 +Murcielago Blackbird 7225

#Connealy Onward
Sitz Henrietta Pride 81M
#GAR Predestined
+Triple E Blackbird 1018

\$W	+27.03
\$F	+48.03
\$G	+36.81
\$B	+90.73

CED	BW	WW	YW	Milk	CW	Marb	RE	SC	Doc		
+5	+3	+59	+106	+29	+42	+0.74	+0.61	+0.89	+4		
ADG Ratio	BW	Adj. WW Ratio	WW Ratio	Adj. YW Ratio	YW Ratio	Frame	SC	Adj. RE Ratio	RE Ratio	Adj. IMF Ratio	IMF Ratio
83	72	687	106	1159	106	6	35.96	11.8	98	3.4	92

Ranking among Non-parent bulls
Top 3% \$B Top 10% CW
Top 10% WN Top 10% \$F
Top 10% YW Top 10% \$QG

Murcielago

Murcielago Advocate 2287

51 Farms

Birth date: 09/23/2012 Bull: 17534455 DDF Tattoo: 2087

#+SS Objective T510 0T26
+Whitstone Advocate
16695113 Sinclair Lady 2P61 4465

#SS Traveler 6807 T510
SS Miss Rita R011 7R8
#+N Bar Prime Time D806
+Ideal 4465 of 6807 4286

#+B/R Ambush 28
+Murcielago Everelda 045
16687289 + Castle Hill Everelda C506

#Rockn D Ambush 1531
+B/R Ruby of Tiffany 8250
#B/R New Design 323
+Sitz Everelda Entense 023

\$W	+33.18
\$F	+19.58
\$G	+53.42
\$B	+85.36

CED	BW	WW	YW	Milk	CW	Marb	RE	SC	Doc		
+5	+2	+51	+79	+21	+20	+1.11	+0.82	+0.53	+11		
ADG Ratio	BW	Adj. WW Ratio	WW Ratio	Adj. YW Ratio	YW Ratio	Frame	SC	Adj. RE Ratio	RE Ratio	Adj. IMF Ratio	IMF Ratio
101	68	608	94	963	88	5	32.43	12.2	102	4.72	127

Ranking among Non-parent bulls
Top 1% \$G Top 5% \$YG
Top 1% \$QG Top 10% RE
Top 2% Marb Top 10% \$B

Murcielago

Murcielago Advocate 2262

52 Farms

Birth date: 09/21/2012 Bull: 17534461 DDF Tattoo: 2262

#+SS Objective T510 0T26
+Whitstone Advocate
16095113 Sinclair Lady 2P61 4465

#SS Traveler 6807 T510
SS Miss Rita R011 7R8
#+N Bar Prime Time D806
+Ideal 4465 of 6807 4286

#GAR Predestined
RAH Princess 851
16386947 RAH Princess 433

#B/R New Design 036
#+GAR Ext 4206
#+GAR Expectation 4915
RAH Princess 823

\$W	+21.70
\$F	+23.58
\$G	+42.00
\$B	+73.81

CED	BW	WW	YW	Milk	CW	Marb	RE	SC	Doc		
-1	+4.8	+47	+80	+22	+20	+1.03	+0.37	+1			
ADG Ratio	BW	Adj. WW Ratio	WW Ratio	Adj. YW Ratio	YW Ratio	Frame	SC	Adj. RE Ratio	RE Ratio	Adj. IMF Ratio	IMF Ratio
100	89	591	91	1045	95	5.2	36.03	10.8	90	5.39	145

Ranking among Non-parent bulls
Top 2% \$QG Top 3% Marb

Murcielago

Murcielago Advocate 2311

53 Farms

Birth date: 10/01/2012 Bull: 17534459 DDF Tattoo: 2311

#+SS Objective T510 0T26
+Whitstone Advocate
16095113 Sinclair Lady 2P61 4465

#SS Traveler 6807 T510
SS Miss Rita R011 7R8
#+N Bar Prime Time D806
+Ideal 4465 of 6807 4286

#GAR Predestined
SF Rita 5H11-9133
16586512 SF Rita 5H11-540

#B/R New Design 036
#+GAR Ext 4206
#+BR Midland
SF Rita 5H11 2111

\$W	+25.11
\$F	+23.07
\$G	+36.71
\$B	+67.44

CED	BW	WW	YW	Milk	CW	Marb	RE	SC	Doc		
+6	+2.4	+42	+78	+22	+20	+0.6	+0.52	+0.35			
ADG Ratio	BW	Adj. WW Ratio	WW Ratio	Adj. YW Ratio	YW Ratio	Frame	SC	Adj. RE Ratio	RE Ratio	Adj. IMF Ratio	IMF Ratio
94	70	563	87	992	91	5.1	32.35	11.6	97	1.81	49

REFERENCE SIRE



WHITSTONE ADVOCATE

ANGUS - HEREFORD CROSS BULLS

Murcielago Murcielago Revolution 2280

54 Farms Birth date: 09/22/2012 Bull: Tattoo: 2280

Feltons Legend 242 Feltons Domino 774
 +MSU TCF Revolution 4R Feltons G15
 42593689 MSU TCF Rachael ET 54N Remittal Online 122L
 HH Miss ADV 786G 1ET

COMMERCIAL ANGUS DAM

ADG Ratio	BW	Adj. WW	WW Ratio	Adj. YW	YW Ratio	Frame	SC	Adj. RE	RE Ratio	Adj. IMF	IMF Ratio
102	78	618	109	1181	103	5.7	37.4	13.2	107	1.64	97

Murcielago Murcielago Revolution 2260

55 Farms Birth date: 09/21/2012 Bull: Tattoo: 2260

Feltons Legend 242 Feltons Domino 774
 +MSU TCF Revolution 4R Feltons G15
 42593689 MSU TCF Rachael ET 54N Remittal Online 122L
 HH Miss ADV 786G 1ET

COMMERCIAL ANGUS DAM

ADG Ratio	BW	Adj. WW	WW Ratio	Adj. YW	YW Ratio	Frame	SC	Adj. RE	RE Ratio	Adj. IMF	IMF Ratio
96	75	596	100	1115	97	5.0	40.4	12.3	100	1.39	82

Murcielago Murcielago R294 2183

56 Farms Birth date: 09/19/2012 Bull: Tattoo: 2183

CL 1 Domino 9126J 1ET HH Advance 767G 1ET
 KCF Bennett 9126J CL 1 Dominette 490
 42651401 KCF Miss 3008 N344 RRH Mr Felt 3008
 KCF Miss H119 L404
 #+Rito 112 of 2536 Rito 616 #Rito 616 of 4B20 6807
 +Murcielago Blackbird T079 GAR Precision 2536
 16424192 +Triple E Blackbird 1018 #Bon View Bando 598
 Davis YR Blackbird 558H

ADG Ratio	BW	Adj. WW	WW Ratio	Adj. YW	YW Ratio	Frame	SC	Adj. RE	RE Ratio	Adj. IMF	IMF Ratio
94	79	591	98	1020	92	6.7	39.8	10.6	86	1.59	94

REFERENCE SIRE



MSU TCF REVOLUTION 4R

SIM - ANGUS CROSS BULLS

Murcielago Murcielago Combination 2222

57 Farms Birth date: 09/18/2012 Bull: Tattoo: 2222

B/R New Frontier 095 B/R New Design 036
 GLS Combination R2 White Fence Pride H1
 GLS Hostess H16 LRS Preferred Stock 370C
 GLS 91X Espresso F01

COMMERCIAL ANGUS DAM

ADG Ratio	BW	Adj. WW	WW Ratio	Adj. YW	YW Ratio	Frame	SC	Adj. RE	RE Ratio	Adj. IMF	IMF Ratio
127	88	562	94	1158	101	6.0	40.2	13.3	108	2.20	130

• Second highest ADG

Murcielago Murcielago Combination 2265

58 Farms Birth date: 09/21/2012 Bull: Tattoo: 2265

B/R New Frontier 095 B/R New Design 036
 GLS Combination R2 White Fence Pride H1
 GLS Hostess H16 LRS Preferred Stock 370C
 GLS 91X Espresso F01

COMMERCIAL ANGUS DAM

ADG Ratio	BW	Adj. WW	WW Ratio	Adj. YW	YW Ratio	Frame	SC	Adj. RE	RE Ratio	Adj. IMF	IMF Ratio
115	80	625	110	1157	100	6.6	39.4	13.2	107	1.59	94

Murcielago Murcielago Combination 2301

59 Farms Birth date: 09/27/2012 Bull: Tattoo: 2301

B/R New Frontier 095 B/R New Design 036
 GLS Combination R2 White Fence Pride H1
 GLS Hostess H16 LRS Preferred Stock 370C
 GLS 91X Espresso F01

COMMERCIAL ANGUS DAM

ADG Ratio	BW	Adj. WW	WW Ratio	Adj. YW	YW Ratio	Frame	SC	Adj. RE	RE Ratio	Adj. IMF	IMF Ratio
112	78	606	103	1139	99	5.6	37.5	11.9	97	1.76	104

Murcielago Murcielago M217 2263

60 Farms Birth date: 09/21/2012 Bull: Tattoo: 2263

STF Mr.Momentum H508 SRS Fortune 500
 SVF/NJC Mo Better M217 LRS Ms Zinger 508C
 2180592 NJC SVF Antoinette K205 HC Power Drive 88H
 NJC TJF Holly Hunter

+Homestretch Traveler 734 LTD #+SVF Gdar 216 LTD
 Oak Hill Miss Blackbird 9801 +Homestretch Miss Wix 301
 13431124 Daltons Miss Blackbird 9128 Daltons Mastermind 61
 Bellevue 247Y Powermist 835

ADG Ratio	BW	Adj. WW	WW Ratio	Adj. YW	YW Ratio	Frame	SC	Adj. RE	RE Ratio	Adj. IMF	IMF Ratio
100	84	558	90	970	88	5.0	33.3	1.6	94	1.65	98

About Our Bulls

The bulls at Murcielago Farms are developed on a high roughage feeding program supplemented with a concentrated grain product. We do not “push” our bulls to consume maximum amount of feed daily, rather we allow them to reach their genetic potential on a well balanced diet. High individual weight gain is not our goal but rather an average of gain within a contemporary group. This assures a fair and accurate comparison among their prospective contemporaries. Every bull at Murcielago Farms is developed in large pastures to provide them with adequate exercise and natural muscle development. The bulls are hand fed each day with the purpose of human interaction. We feel this is important in maintaining a disposition worthy of our customers.

Semen Interest

Murcielago Farms will retain 1/2 revenue sharing, semen interest on all bulls sold. The buyer will have 100% possession and salvage value of the bull unless otherwise stated. The reason behind this is that many of the bulls being sold have the genetic potential to develop into outstanding sires, but may not be realized until later in the bull’s life. If the scenario plays out where Murcielago Farms wishes to collect semen on a bull it will be done at our expense and your convenience. If a buyer collects semen on a bull the cost and semen is owned solely by the buyer. The likelihood of this situation happening is small; however Murcielago Farms will share equally expenses and revenues on any bull where semen is sold.

We are in the Beef Business

Murcielago Farms maintains discipline in our breeding decisions and sire selection. Our registered herd is composed entirely of E.T. and A.I. practices. Using high accuracy, proven bulls allows us to more reliably predict the outcome of subsequent matings. Murcielago Farms understands that our customers are selling beef both by the pound and on the rail, therefore, we feel that selecting for economically important traits is vital in providing the type of bulls that will be profitable for our customers.

MURCIELAGO DISCOUNTS:

- A 5% discount will be applied to buyers who purchase 3 or more bulls on the day of the sale.
- A \$50 discount will be applied to buyers who pick up and settle for bulls purchased on the day of the sale.

American Angus Association® Selection Tools

Expected Progeny Difference (EPD), is the prediction of how future progeny of each animal are expected to perform relative to the progeny of other animals listed in the database. EPDs are expressed in units of measure for the trait, plus or minus. Interim EPDs may appear on young animals when their performance has yet to be incorporated into the American Angus Association National Cattle Evaluation (NCE) procedures. This EPD will be preceded by an "I", and may or may not include the animal's own performance record for a particular trait, depending on its availability, appropriate contemporary grouping, or data edits needed for NCE.

Accuracy (ACC), is the reliability that can be placed on the EPD. An accuracy of close to 1.0 indicates higher reliability. Accuracy is impacted by the number of progeny and the ancestral records included in the analysis.

GROWTH

Calving Ease Direct (CED), is expressed as a difference in percentage of unassisted births, with a higher value indicating greater calving ease in the first-calf heifers. It predicts the average difference in ease with which a sire's calves will be born when he is bred to first-calf heifers.

Birth Weight EPD (BW), expressed in pounds, is a predictor of a sire's ability to transmit birth weight to his progeny compared to that of other sires.

Weaning Weight EPD (WW), expressed in pounds, is a predictor of a sire's ability to transmit weaning growth to his progeny compared to that of other sires.

Residual Average Daily Gain (RADG), expressed in pounds per day, is a predictor of a sire's genetic ability for postweaning gain in future progeny compared to that of other sires, given a constant amount of feed consumed.

Yearling Weight EPD (YW), expressed in pounds, is a predictor of a sire's ability to transmit yearling growth to his progeny compared to that of other sires.

Yearling Height EPD (YH), is a predictor of a sire's ability to transmit yearling height, expressed in inches, compared to that of other sires.

Scrotal Circumference EPD (SC), expressed in centimeters, is a predictor of the difference in transmitting ability for scrotal size compared to that of other sires.

Docility (DOC), is expressed in yearling cattle temperament, with a higher value indicating more favorable docility. It predicts the average difference of progeny from a sire in comparison with another sire's calves.

CARCASS

The genetic evaluation produces a single set of EPDs for carcass weight, marbling score, ribeye area and fat thickness. The units of measure are in carcass trait format and analyzed on an age-constant basis.

Carcass Weight EPD (CW), expressed in pounds is a predictor of the differences in hot carcass weight of a sire's progeny compared to progeny of other sires.

Marbling EPD (Marb), expressed as a fraction of the difference in USDA marbling score of a sire's progeny compared to progeny of other sires.

Ribeye Area EPD (RE), expressed in square inches, is a predictor of the difference in ribeye area of a sire's progeny compared to progeny of other sires.

Fat Thickness EPD (Fat), expressed in inches, is a predictor of the differences in external fat thickness at the 12th rib (as measured between the 12th and 13th ribs) of a sire's progeny compared to progeny of other sires.

MATERNAL

Calving Ease Maternal (CEM), is expressed as a difference in percentage of unassisted births with a higher value indicating greater calving ease in first-calf daughters. It predicts the average ease with which a sire's daughters will calve as first-calf heifers when compared to daughters of other sires.

Maternal Milk EPD (Milk), is a predictor of a sire's genetic merit for milk and mothering ability as expressed in his daughters compared to daughters of other sires. In other words, it is part of a calf's weaning weight attributed to milk and mothering ability.

Mature Weight EPD (MW), expressed in pounds, is a predictor of the difference in mature weight of daughters of a sire compared to the daughters of other sires.

Mature Height EPD (MH), expressed in inches, is a predictor of the difference in mature height of a sire's daughters compared to daughters of other sires.

Cow Energy Value (\$EN), expressed in dollars savings per cow per year, assesses differences in cow energy requirements as an expected dollar savings difference in daughters of sires. A larger value is more favorable when comparing two animals (more dollars saved on feed and energy expenses). Components for computing the cow \$EN savings difference include lactation energy requirements and energy costs associated with differences in mature cow size.

\$VALUE INDEXES

\$Value Indexes, are multi-trait selection indexes to assist beef producers by adding simplicity to genetic selection decisions. \$Values are reported in dollars per head, where a higher value is more favorable. The \$Value is an estimate of how future progeny of each sire are expected to perform, on an average, compared to progeny of other sires in the database if the sires were randomly mated to cows and if calves were exposed to the same environment

Weaned Calf Value (\$W), an index value expressed in dollars per head, is the expected average difference in future progeny performance for preweaning merit. \$W includes both revenue and cost adjustments associated with differences in birth weight, weaning direct growth, maternal milk, and mature cow size.

Feedlot Value (\$F), an index value expressed in dollars per head, is the expected average difference in future progeny performance for postweaning merit compared to progeny of other sires.

Grid Value (\$G), an index value expressed in dollars per head, is the expected average difference in future progeny performance for carcass grid merit compared to progeny of other sires.

Quality Grade (\$QG), represents the quality grade segment of the economic found in \$G. \$QG is intended for specialized user wanting to place more emphasis on improving quality grade. The carcass marbling (Marb) EPD, which is influenced by carcass marbling scores and ultrasound percent intramuscular fat (%IMF) measurements, contribute to \$QG.

Yield Grade (\$YG), \$YG represents the yield grade segment of the economic advantage found in \$G. \$YG is intended for the specialized user wanting to place more emphasis on red meat yield. It provides a multi-trait approach to encompass ribeye, fat thickness and weight into an economic value for red meat value.

\$G combines both \$QG and \$YG, and may be the best carcass decision tool for focusing on quality and red meat yield simultaneously.

Beef Value (\$B), an index value expressed in dollars per head, is the expected average difference in future progeny performance for post-weaning and carcass value compared to progeny of other sires.

DIRECTIONS

GPS Address:
6909 Blenheim Rd • Scottsville, VA 24590

From Lynchburg:

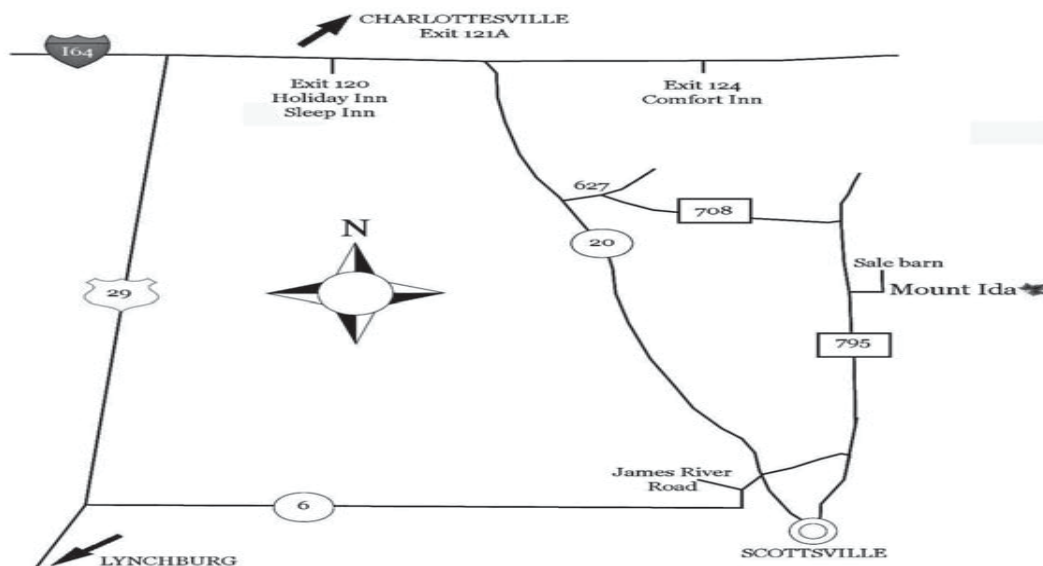
29 North about 42 miles
Turn right on Rt. 6 go 16 miles
Turn Left on James River Rd. go .6 miles
Turn left onto Blenheim Rd. go 3 miles
Turn right into Mt.Ida Farm

From Charlottesville:

From I-64 take 20 South, go 8.5 miles
Turn left onto 627 (Carters Mtn. Rd.)
Take immediate right onto 708, go 3 miles
Turn right onto 795 (Blenheim Rd.) go 5 miles
Turn left into Mt.Ida Farm

Alternate for Trailers from Charlottesville:

From I-64 take 20 South, go 16 miles to Scottsville. Take a left on James River Rd. Go .4 miles. Turn left onto Blenheim Rd. Go 3 miles. Turn right into Mt.Ida Farm.



*Murcielago
Farms*

Murcielago Farms
Keith Shifflett, Manager
538 Mt. Pleasant Farm
Scottsville, VA 24590

